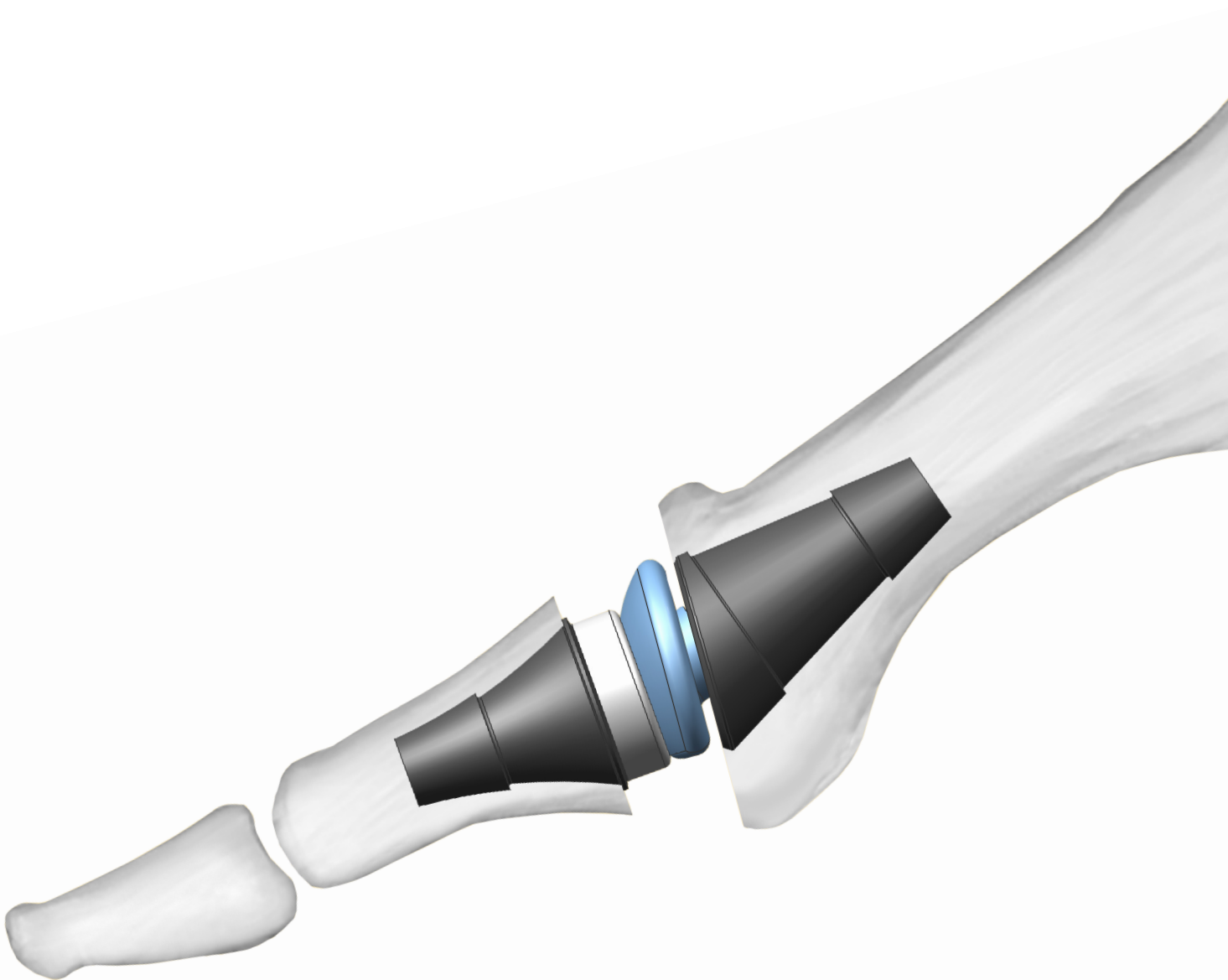




**NÁHRADY MALÝCH KLOUBŮ**  
**SMALL JOINT REPLACEMENTS**



# NÁHRADY MALÝCH KLOUBŮ

## SMALL JOINT REPLACEMENTS



### Náhrady malých kloubů

Náhrada kloubu prstního silikonová

Náhrada trapézia silikonová

Náhrada MTP kloubu palce nohy

Náhrada šlachy silikonová dočasná

Dlaha - Hallux Valgus

### Small joint replacements

MCP/PIP joint replacement

CMC joint replacement

MTP joint replacement

Tendon replacement temporary

Hallux Valgus plate

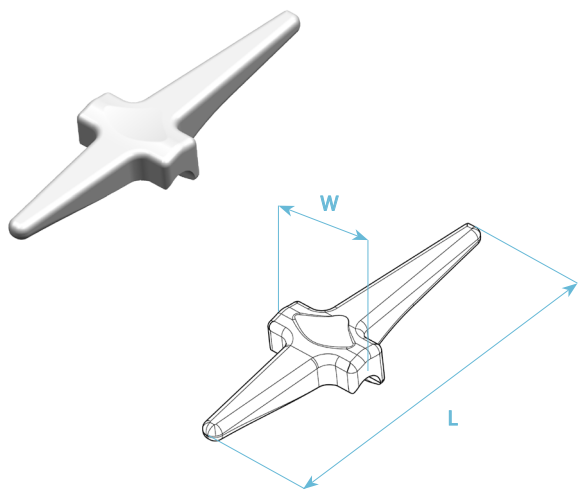
3

3

4-5

6

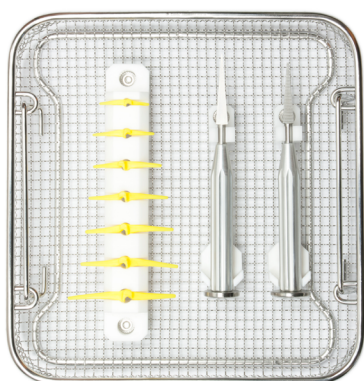
6



**Náhrada kloubu prstního silikonová**  
MCP/PIP joint replacement

- silikon Nusil MED-4550
- necementovaná/cementless

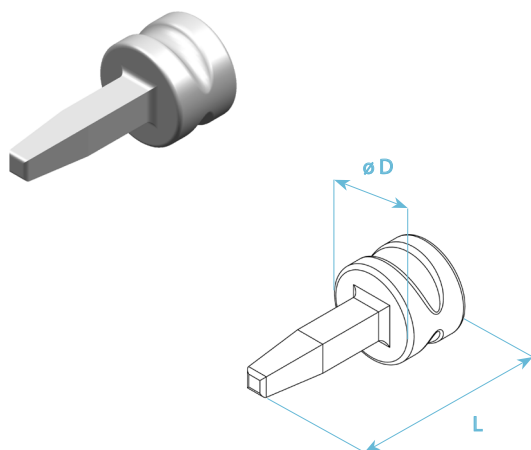
	velikost/size	W	L
<b>Z06110-0200-12035</b>	2	12 mm	35 mm
<b>Z06110-0300-13043</b>	3	13 mm	43 mm
<b>Z06110-0400-14049</b>	4	14 mm	49 mm
<b>Z06110-0500-15055</b>	5	15 mm	55 mm
<b>Z06110-0600-16062</b>	6	16 mm	62 mm
<b>Z06110-0700-17068</b>	7	17 mm	68 mm
<b>Z06110-0800-18075</b>	8	18 mm	75 mm



**Instrumentárium pro náhradu kloubu prstního**  
MCP/PIP joint replacement - instrument set

- včetně sterilizačního kontejneru
- including sterilization container

**Z76130-0000-00**

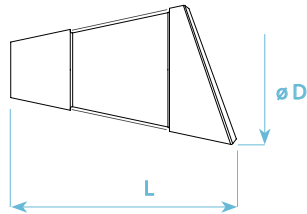


**Náhrada trapezia silikonová**  
CMC joint replacement

- silikon Nusil MED-4550
- necementovaná/cementless

	velikost/size	ø D	L
<b>Z06120-0000-13028</b>	2	13 mm	28 mm
<b>Z06120-0000-14031</b>	3	14 mm	31 mm
<b>Z06120-0000-15035</b>	4	15 mm	35 mm

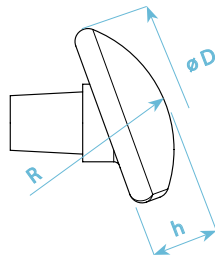
**NÁHRADA MTP KLOUBU PALCE NOHY**  
MTP JOINT REPLACEMENT



**Komponenta metatarzální**  
Metatarsal component

- Ti6Al4V ELI (ISO 5832-3) + HAp
- necementovaná/cementless

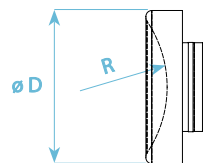
	velikost/size	ø D	L
<b>Z06401-0202-13019</b>	S	13 mm	19 mm
<b>Z06401-0302-14021</b>	M	14 mm	21 mm
<b>Z06401-0402-16023</b>	L	15,5 mm	23 mm
<b>Z06401-0502-17025</b>	XL	16,5 mm	25,4 mm



**Hlavice metatarzální**  
Metatarsal head

- CoCrMo (ISO 5832-12)

	velikost/size	ø D	h	R
<b>Z06400-0105-00010</b>	1	15 mm	4,5 mm	10 mm
<b>Z06400-0205-00010</b>	2	16 mm	5 mm	10 mm
<b>Z06400-0305-00010</b>	3	17 mm	6 mm	10 mm

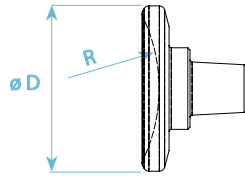


**Vložka falangeální TOTAL**  
Phalangeal insert TOTAL

- UHMWPE (ISO 5834-2)

	velikost/size	ø D	R
<b>Z06400-0104-10011</b>	1	11 mm	10 mm
<b>Z06400-0104-10013</b>	2	13 mm	10 mm
<b>Z06400-0204-10014</b>	3	14 mm	10 mm

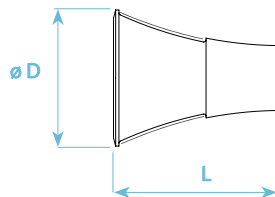
**NÁHRADA MTP KLOUBU PALCE NOHY**  
MTP JOINT REPLACEMENT



**Jamka falangeální HEMI**  
Phalangeal insert HEMI

• CoCrMo (ISO 5832-12)

	velikost/size	$\varnothing D$	R
<b>Z06400-0003-13125</b>	1	13 mm	12,5 mm
<b>Z06400-0003-15150</b>	2	15 mm	15 mm
<b>Z06400-0003-17185</b>	3	17 mm	18,5 mm



**Komponenta falangeální**  
Phalangeal component

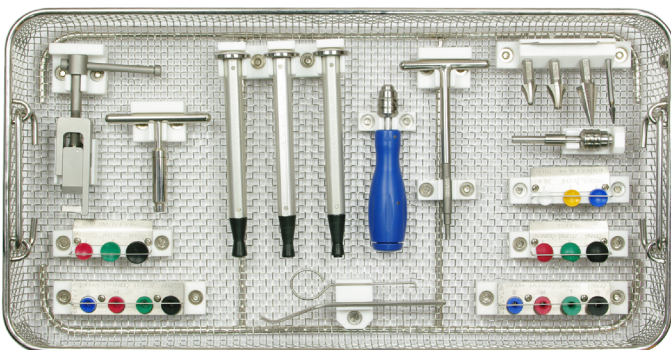
• Ti6Al4V ELI (ISO 5832-3) + HA<sub>p</sub>  
• necementovaná/cementless

	velikost/size	$\varnothing D$	L
<b>Z06401-0101-11013</b>	S	11 mm	12,5 mm
<b>Z06401-0101-12014</b>	M	12 mm	13,5 mm
<b>Z06401-0101-13016</b>	L	12,5 mm	15 mm
<b>Z06401-0101-15016</b>	XL	14,5 mm	16 mm

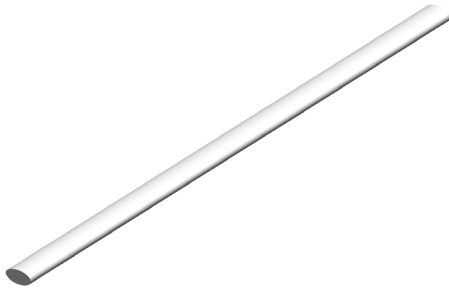
**Instrumentarium pro náhradu MTP kloubu palce nohy**  
MTP joint replacement - instrument set

• bez sterilizačního kontejneru  
• sterilization container not included

**Z76410-0000-00**



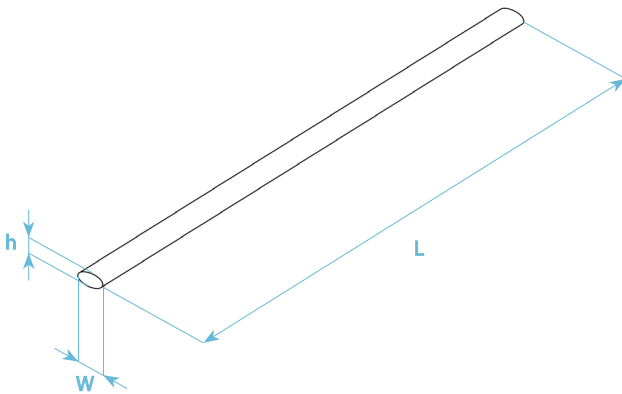
**SILIKONOVÉ IMPLANTÁTY**  
SILICONE IMPLANTS



**Náhrada šlachy silikonová dočasná**  
Tendon replacement temporary

• silikon Nusil MED-4550

	velikost/size	Wxh	L
<b>Z06230-0000-05120</b>	5x2,5x120	5x2,5 mm	120 mm
<b>Z06230-0000-05180</b>	5x2,5x180	5x2,5 mm	180 mm
<b>Z06230-0000-05220</b>	5x2,5x220	5x2,5 mm	220 mm
<b>Z06230-0000-06120</b>	6x3x120	6x3 mm	120 mm
<b>Z06230-0000-06180</b>	6x3x180	6x3 mm	180 mm
<b>Z06230-0000-06220</b>	6x3x220	6x3 mm	220 mm



**DLAHA - HALLUX VALGUS**  
HALLUX VALGUS PLATE

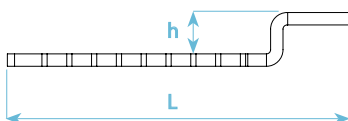


**Dlaha - Hallux Valgus**  
Hallux Valgus plate

• INDIVIDUÁLNĚ ZHOTOVENÝ ZDRAVOTNICKÝ PROSTŘEDEK  
• CUSTOMIZED MEDICAL DEVICE

• FeNiCr (ISO 5832-1)

příklady rozměrů: dimensions example:	h	L
	3 mm	41,3 mm
	5 mm	41,3 mm
	7 mm	41,3 mm



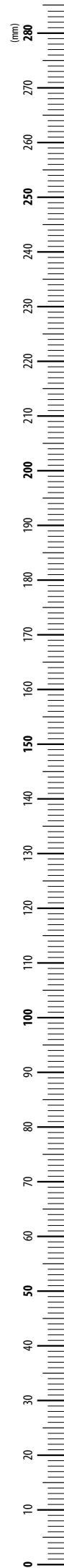


#### POUŽITÉ ZKRATKY A SYMBOLY

MCP	metakarpofalangeální
PIP	proximální interfalangeální
CMC	karpometakarpální
∅	průměr
MTP	metatarzofalangeální
Ti6Al4V	slitina titanu, hliníku a vanadu
ELI	extra-low interstitials
ISO	International Organization for Standardization
HAp	hydroxylapatit
CoCrMo	slitina kobaltu chormu a molybdenu
UHMWPE	Ultra High Molecular Weight Polyethylene
FeNiCr	implantátová nerezová ocel

#### USED ABBREVIATIONS AND SYMBOLS

MCP	metacarpophalangeal
PIP	proximal interphalangeal
CMC	carpometacarpal
∅	diameter
MTP	metatarsophalangeal
Ti6Al4V	titanium, aluminium and vanadium alloy
ELI	extra-low interstitials
ISO	International Organization for Standardization
HAp	hydroxylapatite
CoCrMo	cobalt, chromium and molybdenum alloy
UHMWPE	Ultra High Molecular Weight Polyethylene
FeNiCr	stainless steel for implants





MEDIN, a.s.  
Vlachovická 619  
Nové Město na Moravě  
CZ 592 31  
Czech Republic  
IČ 43378030  
DIČ CZ43378030

**PRODEJ ČESKÁ REPUBLIKA**

tel: +420 312 247 763  
e-mail: ortho@medin.cz

**EXPORT**

phone: +420 566 684 331  
fax: +420 566 684 385  
e-mail: export@medin.cz

**www.medin.cz**  
**www.medin.eu**



**VÝROBA A VÝVOJ**  
ProSpon, spol. s r.o.  
Jiřího Voskovce 3206  
272 01 Kladno

**www.prospon.cz**